

MPS Catalog Number:

S1 40 90 054 MX AL 035

Date:

01/23/2014

END FITTINGS

Tower End Fitting:

Y-Clevis (Forged Steel)

Line End Fitting:

Eye (Forged Steel)

MATERIAL

Corona Ring (Tower):

None

Corona Ring (Line):

None

Corona Rings are recommended for applications of 230 kV and above

Number of Sheds:

17 large 18 standard

Rod Diameter:

16 mm

Weight Estimate:

11.9 lbs 5.4 kg

DIMENSIONAL VALUES

Section Length (L):

67.6 in 1,720 mm

Rubber Length (X):

54.4 in 1,382 mm

Standard Shed Height (P1):

1.5 in 38 mm

Large Shed Height (P2):

2 in 51 mm

Projection Ratio (S/P):

- 1.5

Shed Spacing (S):

3 in 76 mm

Dry Arc Distance:

56.7 in 1,440 mm

Leakage Distance:

158.4 in 4,023 mm

ELECTRICAL VALUES

60 Hz Dry Flashover:

554 kV Min. Withstand: 510 kV

60 Hz Wet Flashover:

491 kV Min. Withstand: 427 kV

Pos. Critical Impulse Flashover:

942 kV Min. Withstand: 824 kV

Neg. Critical Impulse Flashover:

994 kV Min. Withstand: 875 kV

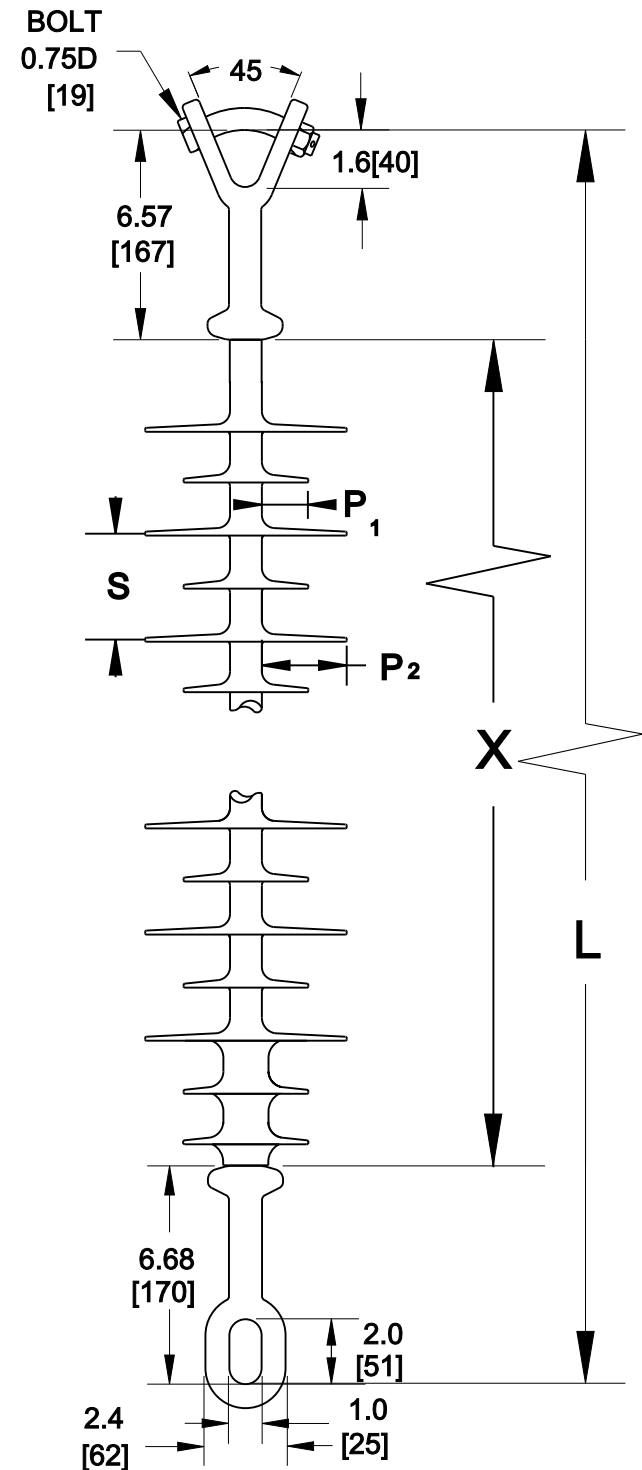
MECHANICAL VALUES

Specified Mech. Load (SML):

25,000 lbs 111.2 kN

Routine Test Load (RTL):

12,500 lbs 55.6 kN



Dimensions: inches [millimeters]

Note: Drawing not actual depiction of insulator appearance

Silicone Rubber Sheath & Sheds
Complies with applicable ANSI and IEC standards.